



FALL 2023 CATALOG

ELEVATE YOUR

LANDSCAPE



Brand Introduction

At SENIX, we break barriers and shatter expectations by redefining and manufacturing outdoor power equipment and power tools with edgy innovation and relentless passion.

Whether you’re an arborist, a landscaper, or a fearless DIY enthusiast, SENIX tools have been crafted with you in mind. We understand the grit, determination, and artistry that go into your craft, and that’s why we’ve designed products that seamlessly extend your skills.

With cutting-edge technology, performance, and eco-friendly design options, we empower you to conquer any task at hand.

Join the movement – dare to be SENIX.



www.senixtools.com



Table of Contents

Senix Power Lineup#5

Cordless Outdoor Power Equipment
X6 | 60V#6
X5 | 58V#10
X2 | 20V#14

Cordless Power Tools
X2 | 20V#21

Corded Outdoor Power Equipment
AC-Corded#26

Power Stations#30

Gas Outdoor Power Equipment
4QL.....#32

Walk-behind.....#41

Lawnmowers#42

Warranty breakdown.....#47

Combo Tool Kits#47



SENIX® WHAT DO WE STAND FOR?

COMFORTABLE EFFICIENT PROFESSIONAL LIGHT
EDGY CONVENIENT AMERICAN USER-FRIENDLY
CONFIDENT **POWERFUL** MUSCULAR BOLD
RELIABLE SOLID **DURABLE** LOGICAL
LASTING PRECISION QUALITY SAFETY PURPOSEFUL
STRONG **INNOVATIVE** NO-NONSENSE
TOUGH
UNIQUE PROTECT UNCLUTTERED MUSCULAR CLEAN
TRUSTWORTHY VALUE GUARD SIMPLICITY PRACTICAL
CONFIDENT CONSISTENT ELEGANT STYLE
IMPACT MODERN INTERNATIONAL

WWW.SENIXTOOLS.COM

SENIX Power Lineup

From Lithium-Ion battery-operated outdoor power equipment to power tools to our corded and gas-powered products, SENIX has a wide selection of tools to meet your needs.



Embrace the Green, Unleash the Beast

Introducing the ultimate set of **60V** outdoor power equipment tools and a cutting-edge battery platform engineered to redefine the landscaping game to tackle large yards and outdoor facilities, while championing the eco-conscious advantages of battery-operated tools. From precision lawn care to heavy-duty facility maintenance, our SENIX X6 cordless technology stands as our best-in-class platform, delivering SENIX's greatest power for every project.



Dominate Your DIY

Elevate your DIY and do more with innovative, battery-powered, **58V** yard tools than you ever could before. Our SENIX X5 cordless technology provides lightweight, eco-conscious, premium performance at an exceptional value.



Light On Pounds, Heavy On Power

Discover the ideal solution for your projects with our **20V** SENIX Tools. From professionals to homeowners, whatever you seek, our range of offerings is tailored to cater to your unique needs.



Hooked Up To Endless Power

Powerfully quiet. And quietly powerful. Corded outdoor power equipment tools mean quieter operation, low vibration, and reduced environmental impact without compromising the need for power.



All Muscle, No Fuss

Patented 4QL technology. Unidirectional quantitative lubrication that prevents flooding, leaks, and keeps the motor lubricated in any direction. Featuring a 4-cycle engine that is lightweight, smooth, and powerful, and does not require mixing oil with gas, the SENIX 4QL is our inaugural line of products.



SENIX | X6 60V LITHIUM-ION



EMBRACE THE GREEN

UNLEASH THE BEAST



*60V maximum initial voltage, 54V nominal voltage

X6 60V

Designed for the landscaper and PRO DIY'er for extended run time and increased power to tackle larger, more demanding jobs.



SENIX

X6 60V LITHIUM-ION

3.0Ah



B30X6

4.0Ah



B40X6

6.0Ah



B60X6

8.0Ah



B80X6

12.0Ah



B120X6

3A



CHX6-L

5A



CHQX6

8A



CHQX6-M

8A



CHDX6-M

Battery Characteristics

- Charge level indicator
- Overmolded box
- Easy grip points for quick insertion & removal
- 100% compatible with all X6 60V products.

DUAL PORT

X6

60V OUTDOOR POWER EQUIPMENT

Versatility and options in power sources across your outdoor power equipment products.



BRUSHLESS™
21" Push Mower
LPPX6-H

Max. Voltage	60V Max
Mowing Functions	3-in-1 (Mulch, Bag and Side Discharge)
Cutting Capacity	True 21" Blade Length
Height Adjustment	1.5"-4", 7 -position
Collection Bag	1.7 bu (60 L)
Runtime	60 min (6.0Ah Battery)
Weight (Tool Only)	57 lbs.

BRUSHLESS™
21" Self Propelled Mower
LPSX6-H

Max. Voltage	60V Max
Mowing Functions	3-in-1 (Mulch, Bag and Side Discharge)
Cutting Capacity	True 21" Blade Length
Height Adjustment	1.5" - 4", 7-position
Drive Type	Variable Speed RWD Self-propelled
Collection Bag	1.7 bu (60 L)
Runtime	65 minutes (8.0Ah Battery)
Weight (Tool Only)	60 lbs.



BRUSHLESS™
16" Chainsaw
CSX6

Max. Voltage	60V Max
No Load Speed	0-14,000 RPM
Chain Speed	0-26 m/s
Chain pitch	Speedcut Nano 80TX
Chain/ Bar Length	16"/18"
Weight (Tool Only)	9 lbs.



BRUSHLESS™
Leaf Blower
BLAX6-M1

Max. Voltage	60V Max
No Load Speed	0-25,000 RPM
Max. Wind Speed	170 MPH
Max. Wind Volume	810 CFM
Weight (Tool Only)	5.51 lbs.



BRUSHLESS™
10" Pole Saw
CSPX6

Max. Voltage	60V Max
No Load Speed	0-11000 RPM
Chain Speed	0-20 m/s
Chain & Bar Length	10"
Adjustment range	5.2~9.2 ft.
Weight (Tool Only)	7.9 lbs.



BRUSHLESS™
26" Hedge Trimmer
HTX6-M1

Max. Voltage	60V Max
Strokes per minute	0-3400spm
Blade Length	27 inch
Max. Cutting Capacity	1-1/4 inch
Weight (Tool Only)	8.2 lbs.



BRUSHLESS™
16" String Trimmer
GTX6-M

Max. Voltage	60V Max
Max rotation speed	6000 RPM
Eco Mode speed	5000 RPM
Cutting Capacity	16"
Line Type	0.095" x2
Line Length	13.1 ft.
Feeding System	Bump
Weight (Tool Only)	7.9 lbs.



SENIX | **X5 58V** LITHIUM-ION

DOMINATE

YOUR DIY



*58V maximum initial voltage, 50.4V nominal voltage.

X5 58V

Designed for the expert DIY'er seeking reliable power at an exceptional value.

SENIX

X5 58V



X5 58V LITHIUM-ION



2.5Ah

B25X5



CHX5

Battery Characteristics

- Battery 58V 2.5Ah
- Charge level indicator
- Overmolded box
- Patented BMS
- Compatible with all X5 58V products

X5

58V OUTDOOR POWER EQUIPMENT

Show the job in the yard who's boss
with the X5 cordless series.



BRUSHLESS™
15" Push Mower
LPPX5-L

Rated Voltage	58V, 2.5AH
Deck size	16"
Cutting Capacity	15"
Height Adjustment	6-position single lever 1" to 3.25"
Collection Bag	1.3 bu (45 L)
Weight(Tool Only)	30 lbs.



BRUSHLESS™
17" Push Mower
LPPX5-M

Rated Voltage	58V, 2.5AH
Deck size	17.3"
Cutting Capacity	17"
Height Adjustment	6-position single lever 1" to 3.25"
Collection Bag	1.4 bu (49 L)
Weight(Tool Only)	36 lbs.



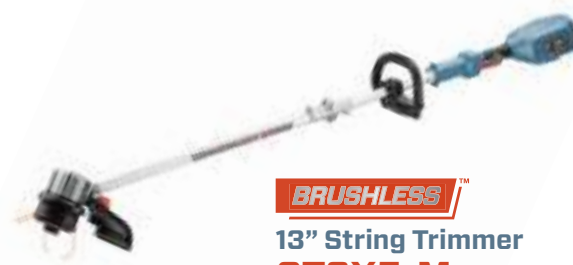
BRUSHLESS™
14" Chainsaw
CSX5-M

Max. Voltage	58V, 2.5AH
No Load Speed	7300 RPM
Chain Speed	15 m/s
Chain & Bar Length	14"
Oiler	Automatic
.Weight (Tool Only)	8 lbs.



BRUSHLESS™
10" Pole Saw
CSPX5-M

Max. Voltage	58V, 2.5AH
No Load Speed	4800 RPM
Chain Speed	9.5 m/s
Chain & Bar Length	10"
Weight (Tool Only)	8.75 lbs.



BRUSHLESS™
13" String Trimmer
GTSX5-M

Rated Voltage	58V, 2.5AH
Cutting Capacity	11-13"
Line Type	0.06" dual
Line Length	29.5 ft.
Feeding System	Automatic
Runtime	Up to 30 min per 2.5Ah
Weight(Tool Only)	6.35 lbs.



BRUSHLESS™
Leaf Blower
BLAX5-M

Max. Voltage	58V, 2.5AH
Max. Wind Speed	129 MPH
Max. Wind Volume	520 CFM
3 Speeds	Low, High, and Turbo
Weight (Tool Only)	4.98 lbs.



BRUSHLESS™
22" Hedge Trimmer
HTX5-M

Max. Voltage	58V, 2.5AH
Strokes per minute	2800 SPM
Blade Length	22"
Tooth Space	1-1/10"
Cutting Capacity	2/3"
Weight(Tool Only)	7.05 lbs.



LIGHT ON POUNDS

HEAVY ON POWER



X2 20V

Whether you're in the yard, in the shop, or in the pit stalls, SENIX X2 20V system is all you need to get the job done!

Proud to be The Official Power Tools of RCR!

2.0Ah



B20X2

2.5Ah



B25X2

4.0Ah



B40X2

5.0Ah



B50X2

2A



CHX2

6A



CHQX2

6A



CHDX2 | DUAL-PORT

Battery and Charger 20V MAX



100 % compatible with all X2 20V outdoor power equipment and power tools

Brushless Electric Motor Technology (BRUSHLESS)



- +25%** Power Boost
- +50%** Increased Run Time
- +100%** Increased Useful Life

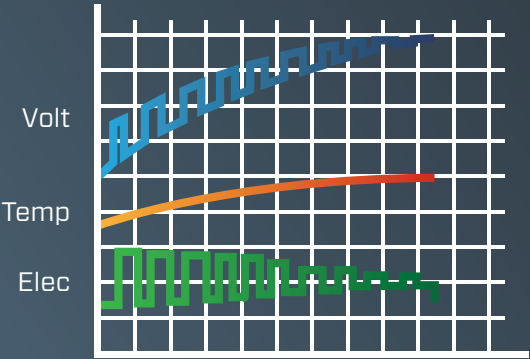
- Brushless electric motor does not require maintenance.
- Without power loss due to friction during operation, and reduces heat generation, motor efficiency can be increased by 25%.
- Allows battery products to work up to 50% longer.
- The service life is greatly improved, which is very suitable for long-term continuous use.

Smart Charging Technology

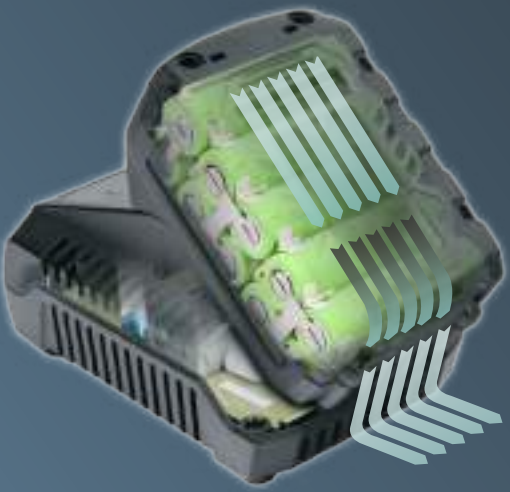
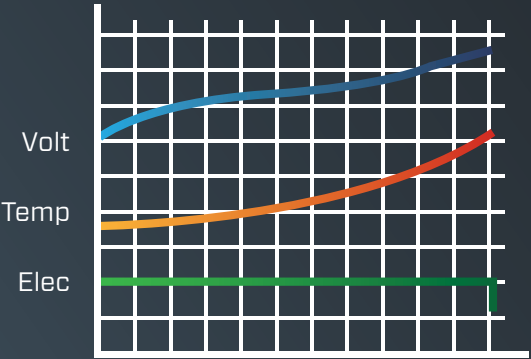
When using the lithium battery, the temperature rises and it must be cooled down before recharging the battery. SENIX recharging technology incorporates a cooling fan in which the air circulation always flows through the lithium battery, cooling it quickly in the recharging process and thus greatly improving the recharging time.



SENIX Recharge Technology



Normal Recharge Technology

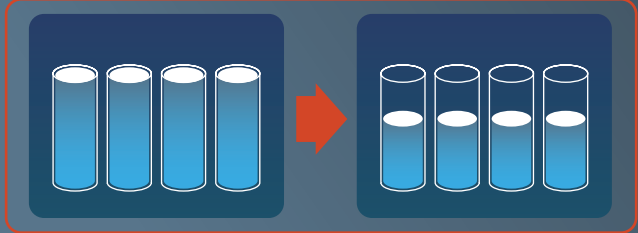


Battery Protection Function

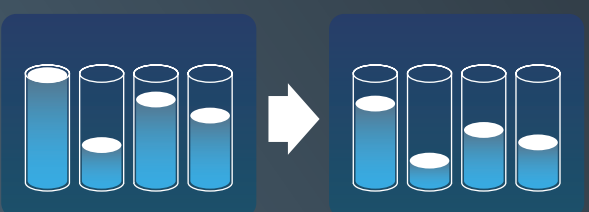
The protection function allows the tools to detect the battery status in real time and exchange data to prevent overcharging, over-discharging and overheating, which increases battery life.

Balanced charging: The battery capacity is evenly distributed to prevent both overcharging and discharge. This uniform discharge helps extend the overall battery lifespan, maximizing its usage time.

SENIX Recharge Technology



Normal Recharge Technology



20V OUTDOOR POWER EQUIPMENT

Perfectly tailored to swiftly tackle tasks in the yard.



10" String Trimmer
GTX2-M

Voltage	20V Max
No-Load Speed	8500 RPM
Cutting Capacity	10"
Line Type	0.065"
Feeding System	Semi-automatic
Weight(Tool Only)	4.32 lbs.



BRUSHLESS™
10" Chainsaw
CSX2-M

Voltage	20V Max
Chain Speed	8 m/s
Oiler	Automatic
Chain & Bar Length	10"
Weight(Tool Only)	8.15 lbs.



350 CFM Blower
BLAX2-M

Voltage	20V Max
Wind Speed	80 MPH
Wind Volume	350 CFM
Weight(Tool Only)	4.63 lbs.



BRUSHLESS™
450 CFM Blower
BLAX2-M3

Voltage	20V Max
Wind Speed	100 MPH
Wind Volume	450 CFM
Weight(Tool Only)	5.42 lbs.



BRUSHLESS™
10" Chainsaw
CSX2-M1

Voltage	20V Max
Chain Speed	11 m/s
Oiler	Automatic
Chain & Bar Length	10"
Weight(Tool Only)	5.07 lbs.



BRUSHLESS™
8" Pole Saw
CSPX2-M

Voltage	20V Max
Chain Speed	5.2 m/s
Chain & Bar Length	8"
Angle modulation	-60° /-30°/0°/30°/60
Collapsing Length	6-7.5 ft.
Weight(Tool Only)	10 lbs.



BRUSHLESS™
5" Pruning Saw
CSX2-M3

Voltage	18V Max 5.0Ah
No-Load Speed	6000 RPM
Chain Speed	11 m/s
Chain & Bar Length	5"
Weight (Tool Only)	2.01 lbs.



18" Hedge Trimmer
HTX2-M

Voltage	20V Max, 5.0 Ah
Cutting Length	18"
Tooth Space	1.1"
Cutting Capacity	3/4"
Strokes per minute	2600 SPM
Blade type	Laser-cut with Alu support
Weight (Tool only)	7 lbs.



18" Pole Hedge Trimmer
HTPX2-M

Voltage	20V Max
Cutting Length	18"
Tooth Space	1.1"
Cutting Capacity	3/4"
Strokes per minute	2600 SPM
Collapsing Height	6.07-7.7 ft.
Angle Modulation	60° / 30° / 0° / 30° / 60° / 90°
Blade type	Laser-cut with Alu support
Weight (Tool only)	9 lbs.



Grass Shear/Shrubber
GSX2-M

Voltage	20V Max
Grass Shear	4"
Hedge Shear	8"
Weight (Tool only)	2 lbs.

Handheld Power Tools

Empower your projects with precision and efficiency using our extensive selection of power tools. From robust drills and impacts to versatile saws, our power tool category offers a wide range of high-performance devices to suit DIY enthusiasts and professionals alike.

SENIX®



THE OFFICIAL POWER TOOLS OF
ACR



BRUSHLESS™
1/2" Drill/Driver
PDDX2-M2

Voltage	20V Max
Max. Torque	540 In-lbs.
No Load Speed	0-600 / 0-2000 RPM
Chuck Style	1/2" Keyless Ratcheting
Clutch Settings	17 + Drill Mode
Weight (Tool Only)	2.65 lbs.



BRUSHLESS™
1/2" Hammer Drill
PDHX2-M2

Voltage	20V Max
Max. Torque	540 In-lbs.
No Load Speed	0-600 / 0-2000 RPM
Impacts Per Minute	0-34,000 IPM
Chuck Style	1/2" Keyless Ratcheting
Clutch Settings	19 + Drill, Drive, & Hammer Modes
Weight (Tool Only)	2.80 lbs.



BRUSHLESS™
1/4" Impact Driver
PDIX2-M2

Voltage	20V Max
Max. Torque	1590 In-lbs.
Collet Style	1/4" Auto-Load Hex
No Load Speed	0-3000 RPM
Impacts Per Minute	0-3800 IPM
Settings	4 Speeds + Reverse Auto-Stop
Weight (Tool Only)	2 lbs.



BRUSHLESS™
1/2" Impact Wrench
PDWX2-M2

Voltage	20V Max
Max Fastening Torque	245 ft lbs.
Max Breakaway Torque	365 Ft-lbs.
No Load Speed	0-3200 RPM
Impacts Per Minute	0-4000 IPM
Settings	4 Speeds + Reverse Auto-Stop Mode
Weight (Tool Only)	2.65 lbs.



BRUSHLESS™
1/2" High Torque
Impact Wrench
PDWX2-M3

Voltage	20V Max
Max Fastening Torque	750 Ft-lbs.
Max Breakaway Torque	1100 Ft-lbs.
No Load Speed	0-1800 RPM
Impacts Per Minute	0-2400 IPM
Settings	3 Speeds + Reverse Auto-Stop Mode
Weight (Tool Only)	6 lbs.



BRUSHLESS™
1/2" High Torque
Impact Wrench
PDWX2-M4

Voltage	20V Max
Max Fastening Torque	1000 Ft-lbs.
Max Breakaway Torque	1400 Ft-lbs.
No Load Speed	0-1800 RPM
Impacts Per Minute	0-2400 IPM
Settings	3 Speeds + Reverse Auto-Stop Mode
Weight (Tool Only)	6.30 lbs.



BRUSHLESS™
3/8" Impact Wrench
PDWX2-M14

Voltage	20V Max
Max Fastening Torque	245 Ft-lbs.
Max Breakaway Torque	365 Ft-lbs.
No Load Speed	0-3200 RPM
Impacts Per Minute	0-4000 IPM
Settings	4 Speeds + Reverse Auto-Stop Mode
Weight (Tool Only)	2.64 lbs.



BRUSHLESS™
1/2" Mid-Torque
Impact Wrench
PDWX2-M7

Voltage	20V Max
Max Fastening Torque	550 Ft-lbs.
Max Breakaway Torque	660 Ft-lbs.
No Load Speed	0-2300 RPM
Impacts Per Minute	0-3000 IPM
Settings	3 Speeds + Reverse Auto-Stop Mode
Weight (Tool Only)	3.75 lbs.



BRUSHLESS™
3/4" High Torque
Impact Wrench
PDWX2-M5

Voltage	20V Max
Max Fastening Torque	1100 Ft-lbs.
Max Breakaway Torque	1500 Ft-lbs.
No Load Speed	0-1800 RPM
Impacts Per Minute	0-2400 IPM
Settings	3 Speeds + Reverse Auto-Stop Mode
Weight (Tool Only)	6.50 lbs.



BRUSHLESS™
1/2" Ext. Reach High
Torque Impact Wrench
PDWX2-M8

Voltage	20V Max
Max Fastening Torque	750 Ft-lbs.
Max Breakaway Torque	1100 Ft-lbs.
No Load Speed	0-1800 RPM
Impacts Per Minute	0-2400 IPM
Settings	4 Speeds + Reverse Auto-Stop Mode
Weight (Tool Only)	6.28 lbs.



BRUSHLESS™

Rotary Hammer
PDRX2-M2

Voltage	20V Max
Chuck Style	SDS Plus
Max Energy Output	1.2J
No Load Speed	0-810 RPM
Impacts Per Minute	0-4500 IPM
Weight (Tool Only)	3.75 lbs.



BRUSHLESS™

4-1/2" Angle Grinder
PAX2115-M2

Voltage	20V Max
No Load Speed	8500 RPM
Switch Style	Locking Slide
Spindle Thread	5/8"
Max Disc Diameter	4-1/2"
Weight (Tool Only)	3.70 lbs.



BRUSHLESS™

5" Angle Grinder
PAX2125-M2

Voltage	20V Max
No Load Speed	8500 RPM
Switch Style	Locking Slide
Spindle Thread	5/8"
Max Disc Diameter	5"
Weight (Tool Only)	3.75 lbs.



BRUSHLESS™

Oscillating Multi-Tool
POX2-M

Voltage	20V Max
No Load Speed	10,000-20,000 OPM
Settings	6 Speed
Oscillation Arc	4° (2x2°)
Weight (Tool Only)	3.96 lbs.



BRUSHLESS™

7-1/4" Circular Saw
PSCX2-M3

Voltage	20V Max
No Load Speed	0-3900 RPM
Bevel Capacity	0-55°
Depth Adjustment	0-2-1/4"
Weight (Tool Only)	4.85 lbs.



1/2" Compact
Reciprocating Saw
PSRX2-M1

Voltage	20V Max
Stroke Length	1/2"
No Load Speed	0-2800 SPM
Weight (Tool Only)	2.60 lbs.



BRUSHLESS™

Random Orbit Sander
PSX2-M

Voltage	20V Max
No Load Speed	0-11,000 OPM
Pad Size	5"
Settings	3 Speeds
Orbit Diameter	1/8"
Weight (Tool Only)	1.98 lbs.



Jobsite Blower
BLX2-M

Voltage	20V Max
Air Speed	0-180 MPH
Air Volume	0-75 CFM
Settings	3 Speeds
Weight (Tool Only)	3.06 lbs.



BRUSHLESS™

7/8" One-Handed
Reciprocating Saw
PSRX2-M2

Voltage	20V Max
Stroke Length	7/8"
No Load Speed	0-3000 SPM
Weight (Tool Only)	3.77 lbs.

Hybrid Power K-Cup
Coffee Maker
CMX2-M4

Voltage	20V Max
Brewing Time	6-8 Minutes
Tank Capacity	8 oz..
Weight (Tool Only)	3.3 lbs.



 **SENIX** | **AC**

HOOKED UP TO

ENDLESS POWER



AC-Corded

Massive, constant power for complete control of your landscape.

 **SENIX**

AC Corded

AC



AC



420 CFM Blower/Vacuum
BLVE12-M

Voltage	120V
Motor Output	12A
Air Speed	0-179 MPH
Air Volume	0-420 CFM
Collection Bag	1.24 bu (44 L)
Variable Speed	6 Settings
Weight	7.05 lbs.



690 CFM Blower
BLAE12-M

Voltage	120V
Motor Output	12A
Air Speed	0-115 MPH
Air Volume	0-690 CFM
Variable Speed	6 Settings
Weight	6.80 lbs.



14" Corded Chainsaw
CSE10-L

Voltage	120V
Motor Output	10A
Chain Speed	8 m/s
Bar & Chain	14" Bar and 3/8" Pitch Chain
Oiler	Automatic
Weight	7.71 lbs.



16" Corded Chainsaw
CSE12-M

Voltage	120V
Motor Output	12A
Chain Speed	13.5 m/s
Bar & Chain	Oregon 16" Bar and 3/8" Pitch Chain
Chain Tensioning	Tool-Free
Oiler	Automatic
Weight	10.80 lbs.



18" Corded Chainsaw
CSE15-M

Voltage	120V
Motor Output	15A
Chain Speed	13.5 m/s
Bar & Chain	Oregon 18" Bar and 3/8" Pitch Chain
Chain Tensioning	Tool-Free
Oiler	Automatic
Weight	11.24 lbs.



8" Corded Pole Saw
CSPE6.5-M

Voltage	120V
Motor Output	6.5A
Chain Speed	11 m/s
Bar & Chain	8" Bar and 3/8" Pitch Chain
Telescopic Pole	6.3-8.53 ft.
Oiler	Automatic
Weight	8.38 lbs.



21" Corded Hedge Trimmer
HTE3.8-L

Voltage	120V
Motor Output	3.8A
No Load Speed	0-3600 SPM
Blade Length	21"
Cutting Capacity	0.71"
Stroke Length	1.1" Dual-Action
Weight	5.29 lbs.

Power Stations & Inverter Generators



Inverter Generator
GN4QL-L



Inverter Generator
CS4QL-M

Engine Type	4-Cycle	4-Cycle
Engine Displacement	56 cc	79 cc
Starting Watts	1000 W	2000 W
Operating Watts	900 W	1600 W
Frequency	60 Hz	60 Hz
AC Output	120 V	120 V
DC Output	12 V	15 V
Working Time	6 Hours @25% Load / 3 Hours @ full load	9.5 hours @ 25% load / 3.5 hours @ full load
DBA	65 dB	65 dB
Gas Tank Capacity	0.52 gal	1 gal
Oil Tank Capacity	6.76 oz..	11.8 oz..
Machine Weight	24.3 lbs.	39.7 lbs.
CO Sensor Technology	Yes	Yes



300W POWER STATION
PS300

Battery	18650 Lithium-ion Battery	18650 Lithium-ion Battery
Cycle Life	500 Cycles	500 Cycles
Capacity	296 Wh	518 Wh
Power	300W rated, 600WMax	600W rated 1300Max
DC Input	1*DC Input:10V-25V 10V@5A 25V@2.5A adapter. Max 60W	1*DC Input 1*PD Input
AC Output	2*AC Outputs: 100-120VAC/60HZ 220-240V/50Hz	2*AC Outputs
USB Output	1*USB-A Ports 1* Quick Charge USB-A Port 1* USB-C Port 18W 1*USB-C 60W	1* Quick Charge USB-A Port 1*USB-A Ports & 2*USB-C Port
DC Output	1*Auxiliary Power Output, 12V/10A 1*DC	1*Auxiliary Power Output 2*DC Outputs
Car Port Charger	Yes	Yes
Weight	6.6 lbs.	11 lbs.



600W POWER STATION
PS600



1200W POWER STATION
PS1200

Battery	33138 Lithium-ion Battery
Cycle Life	1500 Cycles
Capacity	974.4 Wh
Power	1200W rated, 2400 Max
DC Input	1*DC Input 1* Adaptor DC charging Input
AC Output	2*AC Outputs
USB Output	3* USB-A & 2* USB-C
DC Output	1* Auxiliary Power Output
Car Port Charger	Yes
Weight	20 lbs.



SENIX | 4QL®

ALL MUSCLE

NO FUSS


4QL®

Why choose a 4-Cycle?

Quantitative Lubrication – Ultimate 4-Cycle Engine

Patented 4QL technology is unidirectional quantitative lubrication that prevents flooding, leaks, and keeps the motor lubricated in any direction.



All-Direction Use



Mix-Free Fueling
No Mixing of Fuel and Oil



Lower Emissions*



Lower Noise Level*



Light Weight



Up to 50% lower emissions compared to 2-stroke engines.

4QL®

Grass Trimmers



String Trimmer
GTC4QL-L



String Trimmer
GTS4QL-L

Engine Type	4-Cycle	4-Cycle
Engine Displacement	26.5cc	26.5cc
Cutting Swath	17"	17.7"
Line Diameter	.095"	.095"
Line Feeding	Dual Bump-feed	Dual Bump-feed
Shaft Length	54"	57"
Fuel Tank Capacity	9.46 oz.	9.46 oz.
Oil Tank Capacity	2 oz.	2 oz.
Machine Weight	11.33 lbs.	11.97 lbs.



String Trimmer
GTS4QL-M2



2-in-1 Brush Cutter and String Trimmer
GTBCU4QL-M

Engine Type	4-Cycle	4-Cycle
Engine Displacement	31cc	31cc
Cutting Swath	17.7"	18"
Line Diameter	.095"	.095"
Line Feeding	Dual Bump-feed	Dual Bump-feed
Shaft Length	57"	57"
Fuel Tank Capacity	10.9 oz.	10.9 oz.
Oil Tank Capacity	2 oz.	2 oz.
Machine Weight	12.01 lbs.	11.90 lbs.

Pole Saw



8" Pole Saw
CSP4QL-L

Engine Type	4-Cycle
Engine Displacement	26.55cc
Max. Engine Power	7500 W
Chain Speed	18 m/s
Bar Length	8 in
Max Reach	15 ft.
Fuel Tank Capacity	9.46 oz.
Oil Tank Capacity	2 oz.
Machine Weight	12.78 lbs.

Hedge Trimmer



22" Hedge Trimmer
HT4QL-L

Engine Type	4-Cycle
Engine Displacement	26.5cc
Max Engine Power	800 W
Blade Length	22 in Dual Action Blade
Cutting Capability	1-1/8"
Rotating Handle	0°, 90°, 180°
Fuel Tank Capacity	9.46 oz.
Oil Tank Capacity	2 oz.
Machine Weight	11.02 lbs.

Leaf Blowers



Leaf Blowers



Leaf Blower
BL4QL-L

Engine Type	4-Cycle	4-Cycle
Engine Displacement	26.5cc	31cc
Max Engine Power	650 W	800 W
Max. Airflow	410 CFM	550 CFM (Vac) 425 CFM (Blower)
Max. Air Speed	125 MPH	127 MPH
Fuel Tank Capacity	9.46 oz.	9.46 oz.
Oil Tank Capacity	2 oz.	2 oz.
Machine Weight	9.48 lbs.	12.78 lbs.
Recollector	N/A	1.37 bu (48 L)



Leaf Blower/Vacuum
BLV4QL-M



Backpack Blower
BLB4QL-M

Engine Type	4-Cycle
Engine Displacement	49cc
Max Engine Power	650 W
Max. Airflow	600 CFM
Max. Air Speed	200 MPH
Blowing Force	18 N
Fuel Tank Capacity	4.2 oz.
Oil Tank Capacity	5.7 oz.
Machine Weight	19.40 lbs.

Chainsaws



Walk-Behinds



16" Chainsaw
CS4QL-L3



18" Chainsaw
CS4QL-L1

Engine Type	4-Cycle	4-Cycle
Engine Displacement	46cc	46cc
Max. Engine Power	7500 RPM	7500 RPM
Chain Speed	18 m/s	18 m/s
Bar Length	16"	18"
Fuel Tank Capacity	13.53 oz.	13.53 oz.
Oil Tank Capacity	3.4 oz.	3.4 oz.
Chain Oil Capacity	10.2 oz.	10.2 oz.
Machine Weight	13.44 lbs.	13.89 lbs.



46cc Cultivator
TL4QL-L1

Engine Type	4-Cycle	4-Cycle
Rated Power Speed	250 RPM	2660 RPM±200 RPM
Blade Cutting Width	15.75"	N/A
Blade Cutting Depth	7.9" Max	1.8"
Fuel Tank Capacity	27.05 oz.	27.05 oz.
Oil Tank Capacity	3.38 oz.	3.38 oz.
Machine Weight	31.9 lbs.	25.35 lbs.



9" 46cc Lawn Edger
TL4QL-L2

Engine Type	Senix ET37V (37CC)
Rated Power Speed	242 RPM
Gear Ratio	29:1
Auger bit type	Single Blade
Bit diameter (in.)	8" (Option 6")
Fuel Tank Capacity	30.43 oz.
Oil Tank Capacity	2.70 oz.
Machine Weight	26 lbs.



8" 37cc Earth Auger
EA4QL-L



TAKE THE ACHES OUT OF YOUR ACRES



AMERICAN MADE
BRIGGS & STRATTON
ENGINES



20" Push Mower
LSPG-L2



20" Push Mower
LSPG-L3

Engine Type	Briggs & Stratton E300	Briggs & Stratton E300
Engine Displacement	125cc	125cc
Cut Diameter	20"	20"
No-Load Speed	3100 RPM	3100 RPM
Height Adjustment	1.35" / 2.3" / 3.15"	1.25" - 3.75"
Ø Wheel Size D/T	7" (17.78 cm) / 7" (17.78 cm) Ø	7" (17.78 cm) / 7" (17.78 cm) Ø
Rims Material	PP (Polypropylene) with PVC overmolding	PP (Polypropylene) with PVC overmolding
Deck Material	Steel	Steel
Machine Weight	41 lbs.	42 lbs.



21" Push Mower
LSPG-M3

Engine Type	Briggs & Stratton E450
Engine Displacement	125cc
Cut Diameter	21"
Max. Speed	3200 RPM
Height Adjustment	1.25"-3.75"
Ø Wheel Size D/T	8" (20.32 cm) / 8" (27.94 cm)
Rims Material	PP (Polypropylene) with PVC overmolding
Deck Material	Steel
Machine Weight	47 lbs.



21" Push Mower
LSPG-M4

Engine Type	Briggs & Stratton E450
Engine Displacement	125cc
Cut Diameter	21"
No-Load Speed	3200 RPM
Height Adjustment	1.25"-3.75" (3.17 a 9.52 cm) 6-Positions, Dual Lever Adjustment
Ø Wheel Size D/T	8" (20.32 cm) / 11" (27.94 cm)
Rims Material	PP (Polypropylene) with PVC overmolding
Deck Material	Steel
Machine Weight	49 lbs.



21" Push Mower
LSPG-M6

Engine Type	Briggs & Stratton E500
Engine Displacement	140cc
Cut Diameter	21"
Max. Speed	3200 RPM
Height Adjustment	1.25"-3.75"
Ø Wheel Size D/T	8" (20.32 cm) / 11" (27.94 cm) Ø
Rims Material	PP (Polypropylene) with PVC overmolding
Deck Material	Steel
Collector Capacity	N/A
Machine Weight	50 lbs.



21" Push Mower
LSPG-M7

Engine Type	Briggs & Stratton E550
Engine Displacement	140cc
Cut Diameter	21"
Max. Speed	3200 RPM
Height Adjustment	1.25" - 3.75"
Ø Wheel Size D/T	8" (20.32 cm) / 11" (27.94 cm) Ø
Rims Material	PP (Polypropylene) with PVC overmolding
Deck Material	Steel
Collector Capacity	1.7 bu (60 L)
Machine Weight	54 lbs.



21" Self-Propelled Mower
LSSG-M1

Engine Type	Briggs & Stratton EX625
Engine Displacement	150cc
Cut Diameter	21"
No-Load Speed	2900 RPM
Height Adjustment	1.25"-3.75"
Ø Wheel Size D/T	8" (20.32 cm) / 11" (27.94 cm) Ø
Rims Material	PP (Polypropylene) with PVC overmolding
Deck Material	Steel
Collector Capacity	1.7 bu (60 L)
Transmission System	Self-Propelled, FWD
Machine Weight	56 lbs.



21" Self-Propelled Mower
LSSG-H1

Engine Type	Briggs & Stratton EX675
Engine Displacement	163cc
Cut Diameter	22"
No-Load Speed	2900 RPM
Height Adjustment	1.25"-4"
Ø Wheel Size D/T	8" (20.32 cm) / 11" (27.94 cm) Ø
Rims Material	PP (Polypropylene) with PVC overmolding
Deck Material	Steel
Collector Capacity	2 bu (72 L)
Transmission System	Self-Propelled, RWD
Machine Weight	66 lbs.



22" Self-Propelled Mower
LSSG-H2

Engine Type	Briggs & Stratton EXi725
Engine Displacement	163cc
Cut Diameter	22"
No-Load Speed	2900 RPM
Height Adjustment	1.25"-4"
Ø Wheel Size D/T	8" (20.32 cm) / 11" (27.94 cm) Ø
Rims Material	PP (Polypropylene) with PVC overmolding
Deck Material	Steel
Collector Capacity	2 bu (72 L)
Transmission System	Variable Speed, Self-Propelled, RWD
Machine Weight	66 lbs.



WARRANTY

Category	Platform	Tool	Batteries & Chargers
OPE CORDLESS	X6 OPE	5 YEARS	3 YEARS
	X5 OPE	3 YEARS	3 YEARS
	2X2/40V	5 YEARS	3 YEARS
	X2	5 YEARS	3 YEARS
POWER TOOLS CORDLESS	X2	5 YEARS	3 YEARS
POWER STATIONS	POWER STATIONS	3 YEARS	N/A
INVERTER GENERATORS	4QL INVERTER GENERATORS	3 YEARS	N/A
LAWNMOWERS & WALK-BEHIND	GAS MOWERS W B&S ENGINES	2 YEARS	ENGINE: 2 YEARS
	WALK-BEHIND PRODUCTS	2 YEARS	N/A
OPE GAS/4QL	4QL	3 YEARS	N/A
GAS CHAINSAWS	CS4QL-L1 & CS4QL-L3	2 YEARS	N/A
OPE AC-CORDED	AC-CORDED	3 YEARS	N/A

COMBO TOOL KITS

Model No.	Description	Platform	
CSX2-M	20V Chain Saw- W/2.5ah Battery & Charger	X2	OPE
BLX2-M	20V Small Blower-W/2.5ah Battery & Charger	X2	Power Tools
CSX2-M1	20V Top Handle Saw-W/2.5ah Battery & Charger	X2	OPE
PDWX2-M14	X2 20V Brushless 3/8"" Impact Wrench (245 Ft lbs.) W/2.0ah Battery & Charger	X2	Power Tools
CMX2-M4	20V Coffee Maker (K-Cup)-Dc/Ac Hybrid W/1*5.0ah Battery & 2a Charger	X2	Power Tools
PDRX2-M2	X2 20V Brushless Rotary Hammer W/4.0ah Battery & Charger	X2	Power Tools
PSCX2-M3	X2 20V Brushless 7-1/4" Circular Saw W/4.0ah Battery & Charger	X2	Power Tools
BLAGTX5-M	58v Blower & Grass Trimmer Combo W/1 - 2.5ah Battery & 1 - 2a Charger	X5	OPE
BLAGTX2-M	20V Axial Blower & Mpp Line Trimmer Combo - W/ 1-4.0ah Battery & 1-2a Charger	X2	Power Tools
S2K0B2-01	20V 2.0ah Battery * 2 Packs In A Clamshell	X2	Power Tools
S2K0B1-01	20V 2.0ah Battery Pack + 20V 2a Charger In A Clamshell	X2	Power Tools
S2K2B2-01	20V 2-Tool Drill/Driver, Impact Driver Cordless Combo Kit	X2	Power Tools
S2K2B2-02	20V 2-Tool Hammer Drill, Impact Driver Cordless Combo Kit	X2	Power Tools
S2K2B1-03	20V 2-Tool String Trimmer, Blower Cordless Combo Kit	X2	OPE
S2K3B2-01	20V 3-Tool String Trimmer, Blower, Hedge Trimmer Cordless Combo Kit	X2	OPE
BLAGTX2-M	20V Axial Blower & Mpp Line Trimmer Combo - W/ 1-2.5ah Battery & 1-2a Charger	X2	OPE
BLAX2-M	20V Axial Blower- W/4.0ah Battery & Charger	X2	OPE
PDDX2-M2	20V Brushless 1/2" Drill Driver W/2.0ah Battery, Charger & Soft Bag	X2	Power Tools
PSRX2-M2	20V Brushless Compact Reciprocating Saw W/2.0ah Battery, Charger & Soft Bag	X2	Power Tools
PDHX2-M2	20V Brushless Hammer Drill W/2.0ah Battery, Charger & Soft Bag	X2	Power Tools
PDIX2-M2	20V Brushless Impact Driver W/2.0ah Battery, Charger & Soft Bag	X2	Power Tools
BLAX5-M	58V Blower W/Battery & Charger	X5	OPE
GTSX5-M	58V Grass Trimmer W/ Battery & Charger	X5	OPE
CSPX5-M	58V Pole Saw - Includes Battery & Charger	X5	OPE
CSX5-M	X5 58V Cordless Chainsaw W Battery & Charger	X5	OPE
HTX5-M	X5 Hedge Trimmer W/ Battery & Charger	X5	OPE

Scan QR Code for
Digital Catalog!



PHONE

+1.800.261.3981



EMAIL

senix.info@yatusa.com



INSTAGRAM

@senixtools



FACEBOOK

Senix Tools



YOUTUBE

Senix Tools



WWW.SENIXTOOLS.COM